

FIB technique applied to produce quantum cascade laser with single mode operation

The single mode operation of the quantum cascade laser is enforced by using two coupled cavities (CC QCL), produced by milling a gap with FIB technique in a cascade laser manufactured in the standard processing (i.e. by postprocessing).

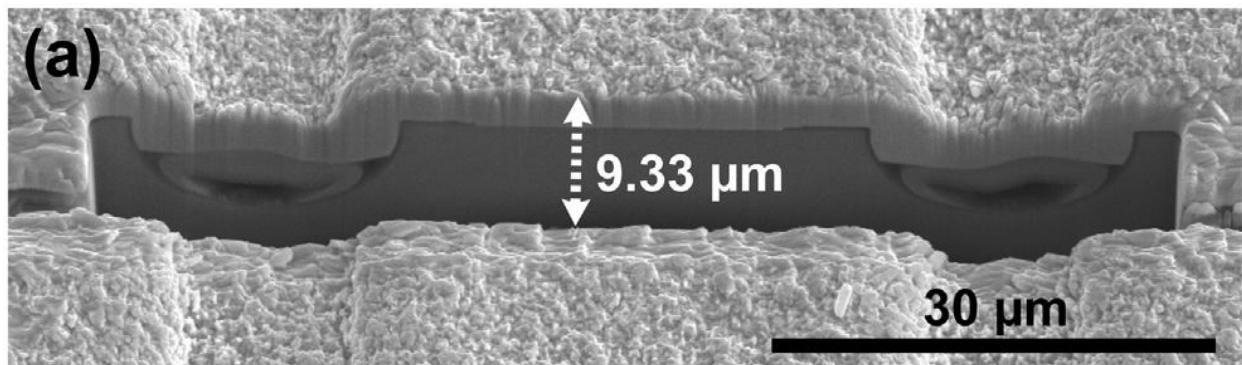


Fig. Gap milled with the use of FIB technique in a quantum cascade laser produced in ITE
